



## Illinois Heartland Library System

---

TO: IHLS Finance Committee  
FROM: Leslie Bednar  
DATE: April 9, 2021  
RE: Edwardsville Building Update

### **Background**

Improvements in our Champaign building delivery area layout a few years ago had a positive impact on delivery efficiency and improved member service. Delivery volume at the Edwardsville building is nearly equal to Champaign's volume, and we wanted to create the same outcome by reconfiguring the delivery space. We faced two challenges: resolution of the primary damage left by mine subsidence and physical dimensions of the delivery area. Our approaches to the challenges were learning opportunities:

- Evaluation by a space planning firm yielded many ideas for improved use of the building; however, our current funding situation cannot support the construction necessary to bring those ideas to life.
- Foundation damage caused by mine subsidence to the north side of the Edwardsville building was repaired by Helitech, Inc. The construction included a new dock inside the garage and polyurethane leveling of the delivery floor area.

In late 2020, IHLS reached out to Color Art to manage the minor building improvements and design updates to surfaces for the first floor of the Edwardsville building. We considered the post COVID-19 office—its hallmarks and requirements for staff health and safety including:

- ergonomics/posture
- physical distancing
- privacy
- cleanable surfaces
- staff organization by function creates efficiencies
- classic and practical design based on job function
- collaboration configurations

### **Proposal**

Attached please find a depiction of the first floor by our Color Art design team. It is a fairly accurate representation of the layout and design with a few details yet to be resolved. The version we will share with you prior to the special board meeting should be the final design and incorporate as many details as possible. We hope this provides sufficient visual information and allows you to envision the space.

Most of the furnishings are manufactured by Steelcase and are under warranty. Our current furniture is Steelcase. The durable pieces have lasted several decades and many layout versions.

---

IMAGINING TOMORROW ~ DELIVERING POSSIBILITIES TODAY!

---

We appreciate your patience and support as we work through the process of designing a staff-and budget-friendly workplace. Our hope is that it will serve our needs well now and a couple of decades into the future, too. Please let me know if you have any questions and I will do my best to answer them before the committee meeting. Thank you.

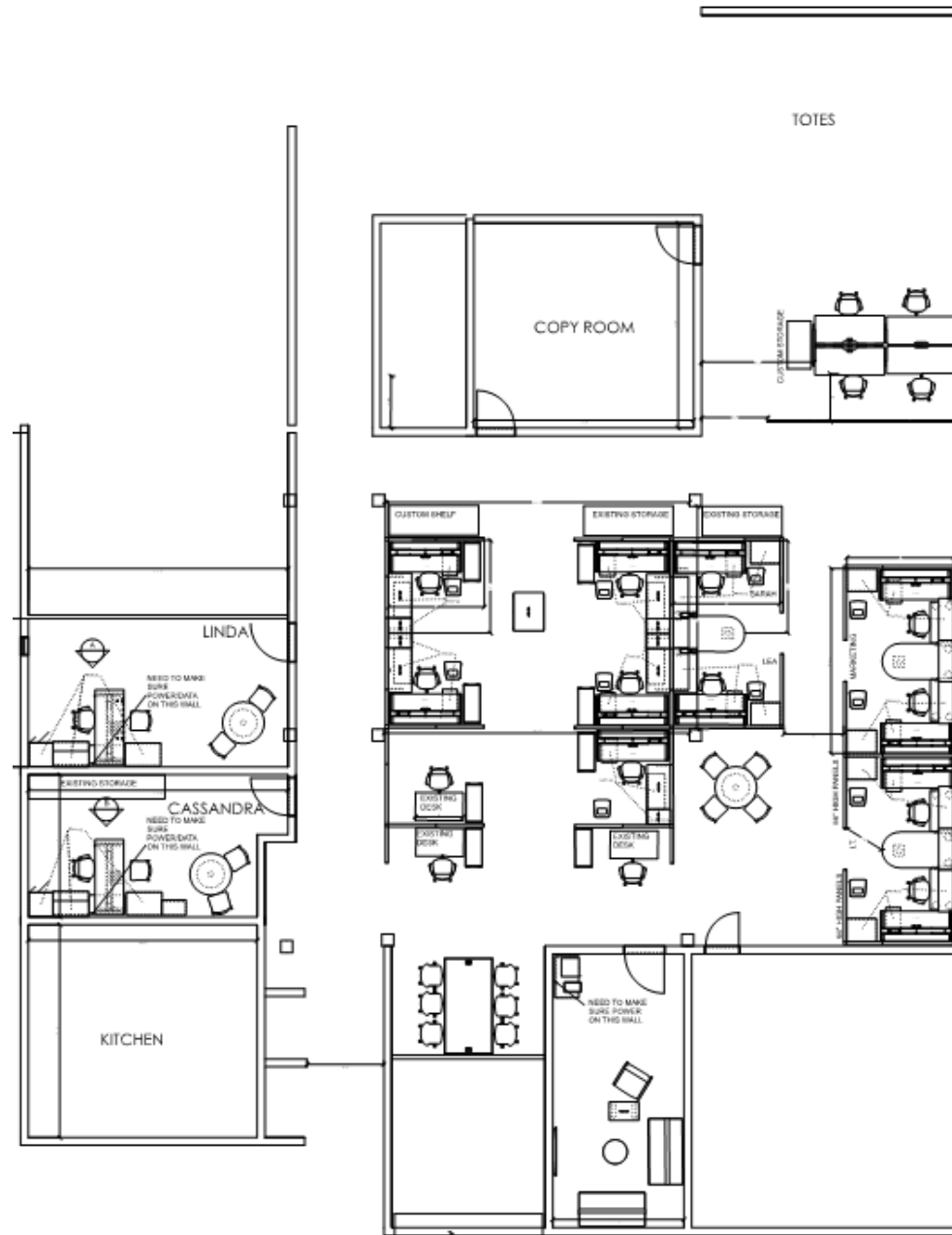


**Illinois Heartland Library System**

PROJECT	EDW 1 <sup>ST</sup> FLOOR
CLIENT NAME	ILLINOIS HEARTLAND LIBRARY
DESIGN	GINNY HAUMESSER
SALES	SHAWNEE BLOCK
PROJECT #	220201 FOLDER #
QUOTE / ORDER #	Q191523

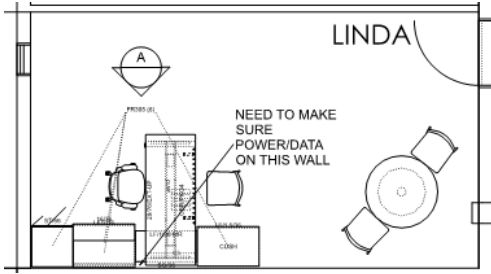
## PROJECT VALIDATION

### OVERALL PLAN

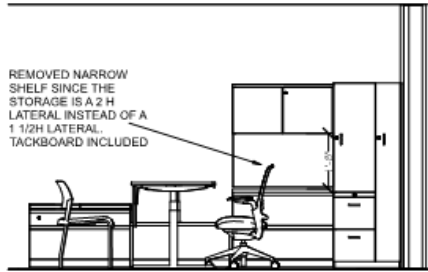


## PROJECT VALIDATION

### PRIVATE OFFICE | LINDA



Elevation A



TASK CHAIRS NOT INCLUDED

## VISUALS



## FINISHES

LAMINATE	CUSHION	FRAME	SHELL
VIRGINIA WALNUT	PENNANT CELLIAANT 3861-901	PLATINUM	PLATINUM
PAINT	FABRIC		
FOG	DTEX PENNANT 3861-901		

## OPTIONS

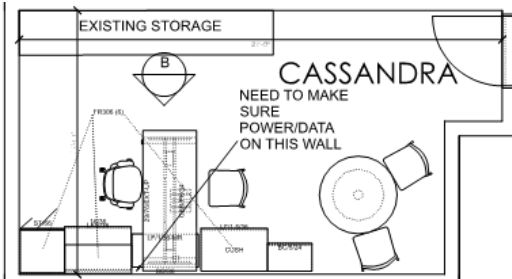
- CURRENCY OVERHEAD
- UNIVERSAL LOW STORAGE
- TOWER TOO WARDROBE
- MIGRATION HEIGHT ADJUSTABLE DESK, T LEG, EXTENDED, NO OVERHANG, UP/DOWN CONTROL, SQUARE EDGE
- STEELCASE MOVE CHAIR
- HARD GLIDES

NOTE: Colors shown are not representative of actual finish. Please see or request a physical finish sample.

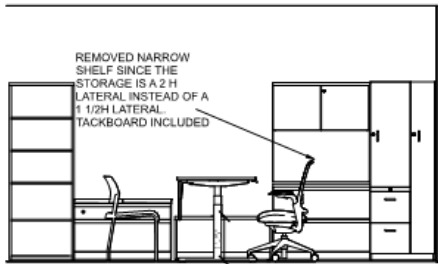
OUTSTANDING

## PROJECT VALIDATION

### PRIVATE OFFICE | CASSANDRA



Elevation B



TASK CHAIRS NOT INCLUDED

VISUALS



FINISHES

LAMINATE	CUSHION	FRAME	SHELL
VIRGINIA WALNUT	PENNANT CELLIAANT 3961-901	PLATINUM	PLATINUM
PAINT	FABRIC		
FOG	DTEX PENNANT 3961-901		

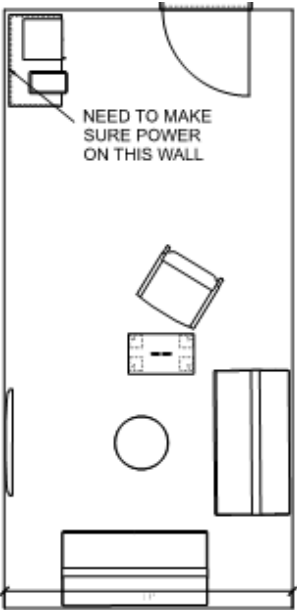
OPTIONS

- CURRENCY OVERHEAD
  - UNIVERSAL LOW STORAGE
  - TOWER TOO WARDROBE
  - MIGRATION HEIGHT ADJUSTABLE DESK, T LEG, EXTENDED, NO OVERHANG, UP/DOWN CONTROL, SQUARE EDGE
- STEELCASE MOVE CHAIR
- HARD GLIDES

NOTE: Colors shown are not representative of actual finish. Please see or request a physical finish sample.

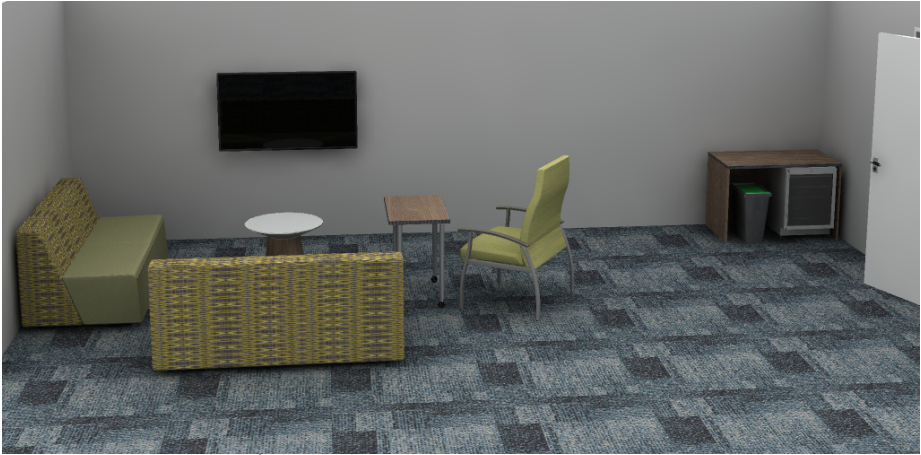
OUTSTANDING

# PROJECT VALIDATION WELLNESS ROOM



OUTSTANDING

VISUALS



FINISHES

ARM CAP CONCRETE	PAINT PLATINUM METALLIC
FABRIC BRISA CELERY	LAMINATE VIRGINIA WALNUT

BACK DTEX FLUENT CHARCOAL	SEAT BRISA CELERY

OPTIONS

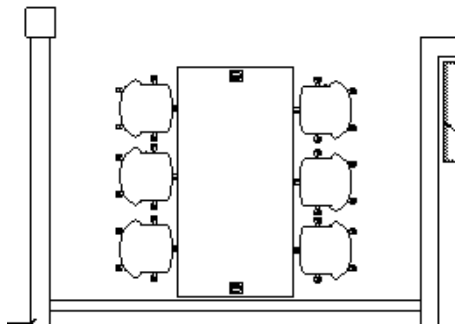
- NATIONAL WELI PATIENT CHAIR
- HARD GLIDES
  - WITH ARMS
- CURRENCY DESK
- FULL HEIGHT MODESTY

- STEELCASE CAMPFIRE BIG LOUNGE
- CAMPFIRE PAPER TABLE
- WITH GLASS TOP
  - NO PAPER

NOTE: Colors shown are not representative of actual finish. Please see or request a physical finish sample.

PROJECT VALIDATION

BIG TABLE



OUTSTANDING

VISUALS



FINISHES

PLASTIC	BASE	TABLE	POWER GROMMET
JAZZ 6336	PLATINUM 4799	VIRGINIA WALNUT 2535	FOG

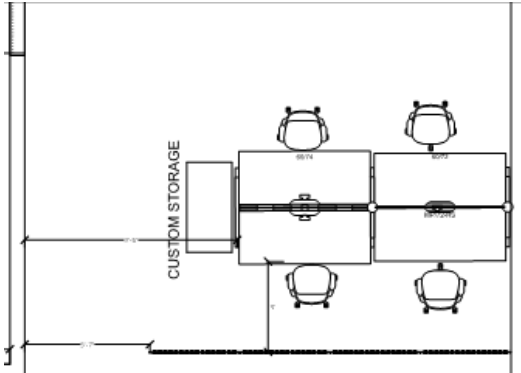
OPTIONS

STEELCASE SHORTCUT STOOL	CAMPFIRE BIG TABLE 40H X 96W X 48D
--------------------------	------------------------------------

NOTE: Colors shown are not representative of actual finish. Please see or request a physical finish sample.



# PROJECT VALIDATION BIVI & SCREENS



VISUALS

FINISHES

<div>PAINT</div> <div>FOG</div>	<div>SCREEN</div> <div>BILLIARD PEWTER 5H20</div>	<div>LAMINATE</div> <div>VIRGINIA WALNUT</div>	<div>HANGING PANEL</div> <div>VERVE FELT CELESTIAL FC5</div>
<div>PLASTIC</div> <div>PLATINUM</div>	<div>MODESTY</div> <div>BILLIARD CUMULUS</div>	<div>POWER</div> <div>ARCTIC WHITE GLOSS</div>	

OPTIONS

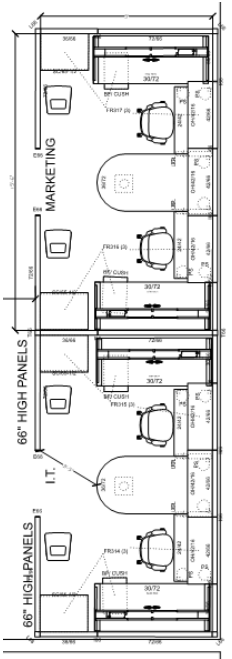
- BIVI SIT STAND DESK
- 8 DUPLEX RECEPTACLES
- POWER STRIP – 2 DUPLEX, 2 USB
- AMQ HANGING PANELS - SHIMMER

OUTSTANDING  
CHAIRS NOT INCLUDED

NOTE: Colors shown are not representative of actual finish. Please see or request a physical finish sample.

# PROJECT VALIDATION

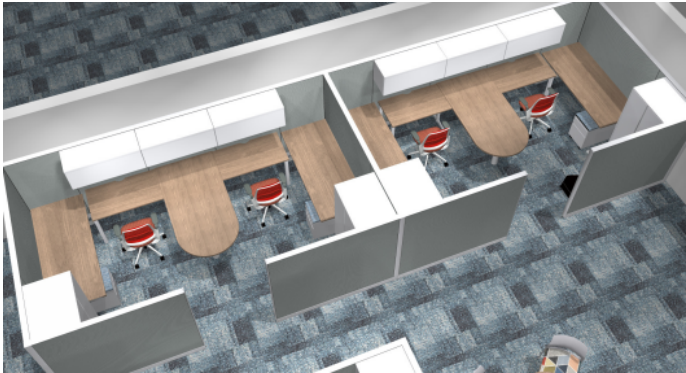
## IT AND MARKETING



OUTSTANDING

- CHAIRS NOT INCLUDED

VISUALS



FINISHES

PAINT	SKINS
FOG	P204 NEW OPAL
PED CUSHION	LAMINATE
DTEX CHUNKY TWEED 3172-403	VIRGINIA WALNUT



OPTIONS

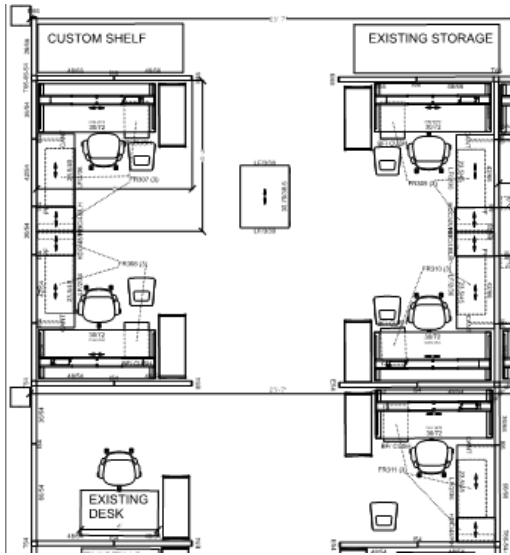
- STEELCASE ANSWER PANELS WITH LAMINATE SURFACES
- 24X42 WORKSURFACES WITH SCALLOP AND CORD DROP
- 30X72 WORKSURFACE NO SCALLOPS OR CORD DROP
- UNIVERSAL BIN IN THE CASE
- MOBILE PED WITH INTEGRAL PULL

CAMPFIRE FOOTREST

NOTE: Colors shown are not representative of actual finish. Please see or request a physical finish sample.

# PROJECT VALIDATION

## SORTERS AND CATALOGERS



VISUALS



FINISHES

PAINT	SKINS
FOG	P204 NEW OPAL
PED CUSHION	LAMINATE
DTEX CHUNKY TWEED 3172-403	VIRGINIA WALNUT

- STEELCASE ANSWER PANELS WITH LAMINATE SURFACES
- 30X72 WORKSURFACE NO SCALLOPS OR CORD DROP
- UNIVERSAL BIN IN THE CASE
- MOBILE PED WITH INTEGRAL PULL

Nile pull
PULL
PLATINUM METALLIC

- HD TOWER
- HD CABINET WITH SHELF AND COAT CLOSET
- NILE PULL

PAINT	PLASTIC
PLATINUM METALLIC	PLATINUM SOLID
FABRIC	
DTEX PENNANT 3081-001	

- MOVE CHAIR
- NO ARMS
- HARD GLIDES



MERLE
-------

CAMPFIRE FOOTREST

OUTSTANDING

- CHAIRS NOT INCLUDED

OPTIONS

NOTE: Colors shown are not representative of actual finish. Please see or request a physical finish sample.